

OPERATING MANUAL

400 Ampere, 3-Phase, 4 Pole
STATIC TRANSFER SWITCH

i-STS400GsL 240/415 - 35 kA

Table of Contents

1.0 SYSTEM DESCRIPTION.....	3
1.1 Static Transfer Switch (STS).....	3
2.0 SYSTEM DISPLAY PANEL.....	5
2.1 Controls.....	5
2.2 LCD Display.....	7
2.2.1 Variables.....	8
2.2.2 Settings.....	9
2.2.3 Status.....	10
3.0 SYSTEM DESCRIPTION.....	11
3.1 LED Interface.....	12
3.2 User I/O Controls.....	13
3.3 User Alarm Panel Access.....	14
4.0 MAINTENANCE OPERATIONS.....	15
4.1 Maintenance Bypass Procedure.....	15
4.2 To Maintenance Bypass.....	17
4.2 Reinstatement from Maintenance Bypass.....	18
4.4 Fault Diagnosis & Maintenance.....	19
4.5 Interpretation of LCD event list.....	20
4.6 Load Fault.....	22
5.0 SYSTEM DESCRIPTION.....	23
6.0 SPECIFICATIONS.....	26
6.1 Operating Parameters.....	26.
7.0 MAIN ITEM COMPONENTS.....	27
8.0 CONTACTS.....	28

SYSTEM DESCRIPTION

1.1 Static Transfer Switch (STS)

The Static Transfer Switch (STS) provides power and redundancy to items requiring / having only a single AC supply. The STS selects this supply from one of two input AC supplies. If one of the supply sources becomes unavailable the STS will automatically transfer the critical load to the alternative AC supply source. Manual selection of supply is also possible.

This Static Transfer Switch has 3 identical and symmetrical switches, one for each phase of the 3-phase AC supply output.

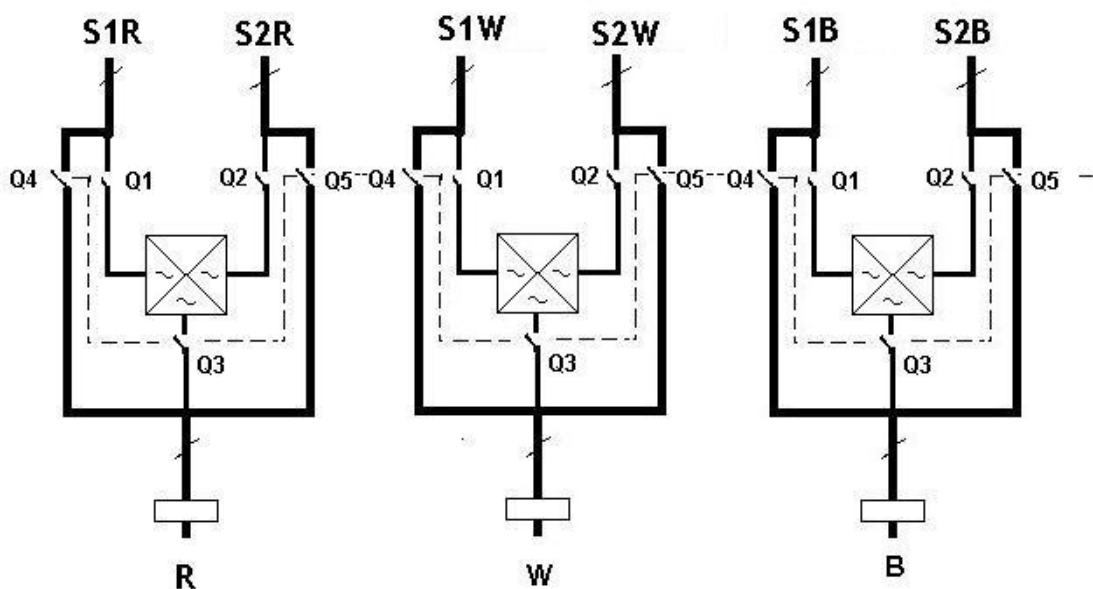


fig. 1.

This STS implementation uses Break-Before-Make transfer characteristics to ensure that the two sources are never paralleled so that the failure of one supply source has no impact on the other. The supplies can be truly independent.

The installed STS is a 4 Pole switch (3-pole only shown in Fig 1) where the neutral is also switched.

Upon incoming supply failure or degradation of the selected supply the STS immediately transfers the critical load to the alternative stand-by source.

The break time is usually less than one millisecond, however under worst case conditions, can be up to 5 milli-seconds.

In the case of down stream load fault conditions, the fault current drawn from the supply may degrade or damage the supply sources as a consequence should a fault current exist in the load the STS will inhibit a transfer to the alternate source even if this causes source supply_

degradation or loss. At least the fault will not be transferred to the alternate supply with the possibility of degrading both sources. The current threshold for isolation is pre-set and is dependent on factors such as the capacity of the supply sources, line impedance and the line protection schemes employed for each STS.

The STS is completely self-contained with its own detection, logic, display and controls.

2. SYSTEM DISPLAY PANEL

The system display panel consists of a LED mimic, LCD information display, (optional) and control pushbuttons. The optional LCD display is fitted to these units though it is not required for normal operation.

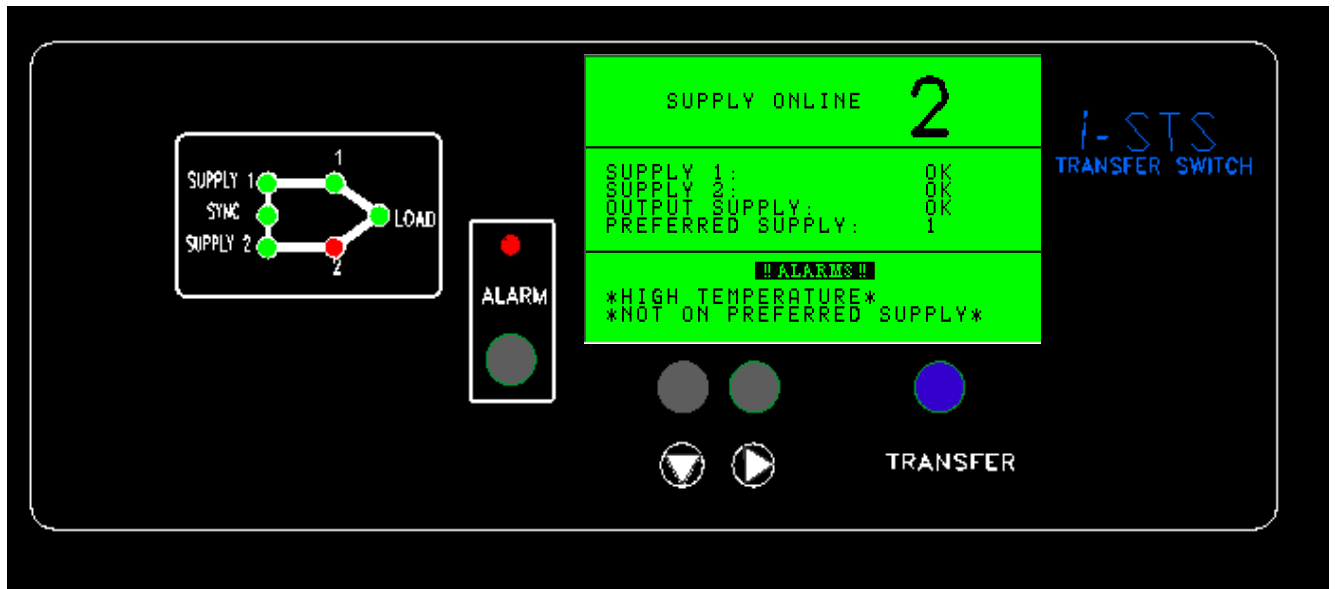


fig. 2.

All LEDs are bi-colour where GREEN indicates the normal or on state.

2.1 Controls

The LCD control pushbuttons are as follows

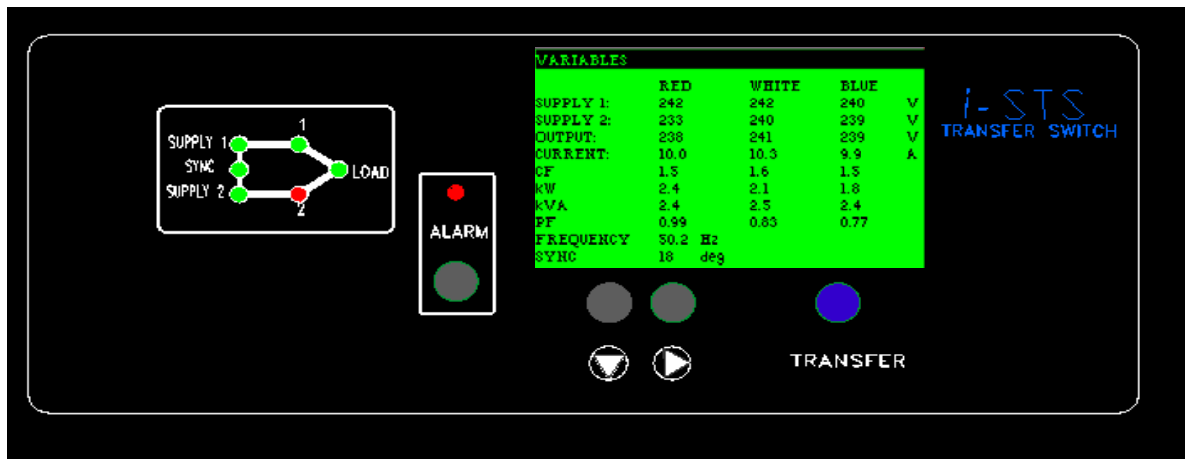
↓	Scroll Down to select
→	Scroll Across for more
TRANSFER	Transfer to alternate supply
ALARM	Cancel Audible / Acknowledge / Lamp Test

The TRANSFER pushbutton forms part of the mimic display and is standard on all units. The operator merely pushes the transfer pushbutton to effect a transfer to the alternate supply. The availability of supply 1 and 2 is indicated by their respective supply LEDs. The synchronization hold-off LED is located between the two supply LEDs. Green is in synchronism.

LEDs 1 and 2 indicate which source is supplying the critical load.

All LEDs are bi-colour where GREEN indicates the normal or on state.

An alarm LED indicates an unacceptable or fault condition. Information as to the cause of the alarm condition is available from the LCD or the status LEDs located on the control board on the inside of the front door. The alarm LED and audible alarm can be cancelled by pressing the Alarms Cancel pushbutton below the ALARM LED.



2.2 LCD Display

The LCD display provides information on the operation of the Static Transfer Switch. None of the function selections available on the LCD cause a change of source selection or STS state.

The LCD menus are structured in a hierarchy through which the operator navigates by use of the LCD control pushbuttons.

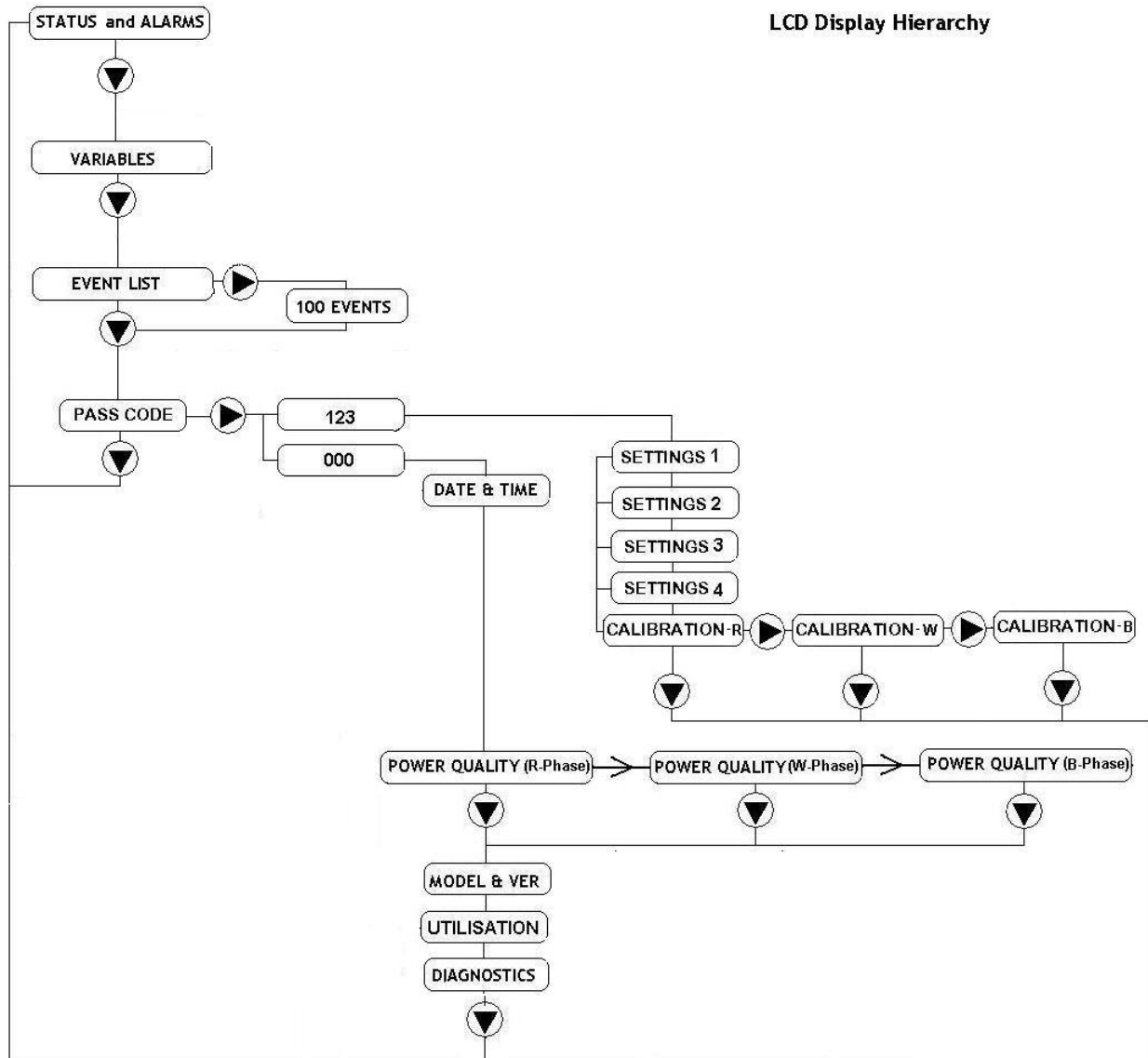


fig. 3. LCD hierarchy.

The '↓' pushbutton exits the hierarchal tree and returns the operator to the Status Screen. From there the following submenus are available.

2.2.1 Variables

This menu item shows the input & output variables.

- Output Voltage R, W & B phase.
- Output Current R, W, & B phase.
- Output Power Factor.
- Output Power (kWatts).
- Output Power (kVA)
- Frequency for each source
- Crest Factor
- 1 Source Input Voltage R phase.
- 1 Source Input Voltage W phase.
- 1 Source Input Voltage B phase.
- 2 Source Input Voltage R phase.
- 2 Source Input Voltage W phase.
- 2 Source Input Voltage B phase.
- Phase Angle between Sources 1 & 2

Events List

Real time event list – 100 most recent events

(see fault diagnosis section for explanation of events)

2.2.2 Settings

This menu item provides a facility for adjusting STS settings and calibrations.

Password

Restricted access to set-up menus (optional menu item).

2 levels of access (000) and (123), can be changed by user

Date / Time

Date and Time adjustment.

This menu item displays general information about the equipment.

Contact details

Service contact numbers.

Model Specification & Software & Firmware revision status.

Internal Settings (Needs Special PASSWORD for access)

Access to calibration submenus including:

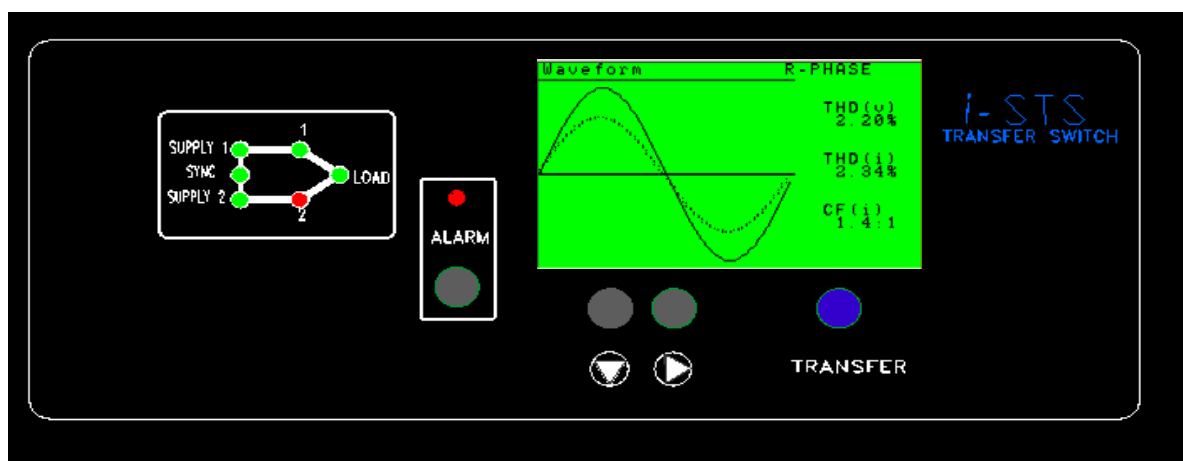
- Source 1 Voltage
 - Transient Hi /Lo
 - Steady State Hi / Lo
- Source 2 Voltage
 - Transient Hi /Lo
 - Steady State Hi / Lo
- Output Voltage
 - Transient Hi /Lo
 - Steady State Hi / Lo
- Output Current
 - Overcurrent Threshold
 - Overload I2t (time and current)
- Settings
 - Re-Transfer
 - Delay / no of re-tries
 - Preferred Source Selection
- Diagnostics

Synch Angle Detection Setting

Provides access to adjust the allowable not in synchronism transfer. (Default is 9° and is adjustable between $5^\circ - 30^\circ$), Manual transfers are inhibited when supplies are outside this range, however, automatic transfers will experience a 100 msec break.

Harmonic Analysis

Used for Maintenance to determine load characteristic, measurement of waveform quality of any output voltage and current phase, (R, W or B), are analysed and indicated (limited to 13th). (See waveforms, THDV, THDI and Crest factor).



2.2.3 Status

This menu item provides details on the equipment operating status and utilization history.

STS Status

Status summary of the Static Transfer Switch. Provides information on any active alarm or fault conditions.

Alarms

Other active conditions and digital inputs.

Calibration Menus

Used to adjust display accuracy (only or +/- 2 – 3 volts)

3.0 STATIC TRANSFER SWITCH OPERATION

The Static Transfer Switch control panel consists of an LCD display, LEDs and pushbuttons to provide information on the operation and status of the equipment. The LCD pushbuttons and LCD menu items cannot change the state of the Static Transfer Switch; this can only be done with the transfer pushbuttons.

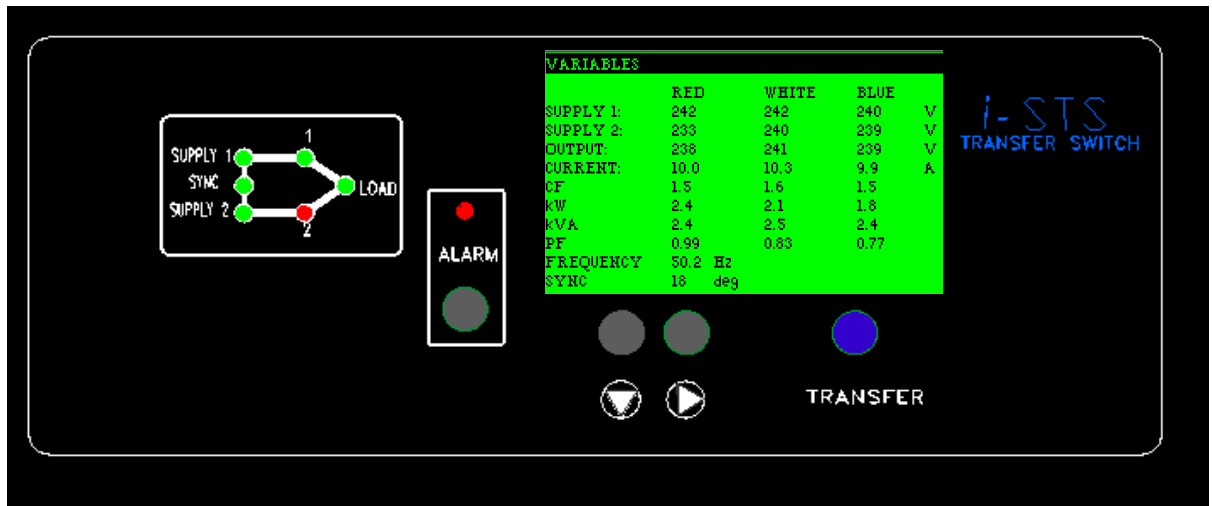


fig. 4.

Selection of the preferred source to supply the critical load is made by simply pressing the transfer pushbutton for at least 2 seconds. Provided the supplies are within synchronization limits, the selected supply will be connected to the load. Verification is provided by the LCD and mimic LEDs.

If the selected supply should vary outside preset limits and become unusable, the STS will automatically transfer the load to the alternative supply. The preferred source directive (preset able) will ensure that the STS will return to the preferred source if it is available and within acceptable limits, after a settling time.

The preferred source selection does not operate if the STS is manually transferred to the alternative supply from the controls on the front panel.

Preferred source selection is pre-set by a mechanical slide switch inside the unit or via menu selection. Note that at power-up the STS will activate the preferred source Transfer Switch as pre-set by the slide switch, either supply 1 or 2 as set will connect power to the load. If no preferred source is set then the unit will not re-transfer to the original source.

Manual transfers override the preferred source selection, (operation of STS to alternate supply say S1 when preferred is S2, where S1 fails will transfer to S2 but not return back to S1). Preferred source selector can also be used to transfer the critical load.

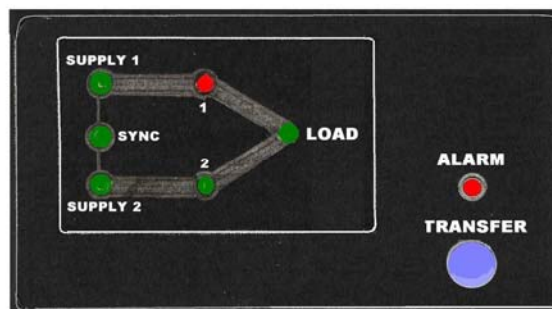
The Static Transfer Switch is fitted with two manual bypass isolators (refer fig. 1.). These are designated Q4 and Q5 where Q4 corresponds to the supply 1 switch and Q5 corresponds to the supply 2 switch. These are mechanically and electrically interlocked to ensure that the two inputs 1 and 2 can never be permanently connected in parallel.

Note that this is a standard option and can be provided by others outside the STS.

3.2 LED INTERFACE

LED front panel controls consists of only one manually operated transfer switch pushbutton. The user must press and hold for At least 2 seconds to affect a manual transfer to the alternate supply. Note that manually transferring overrides the preferred source selection at the rear of the unit.

The LED mimic shows a limited number of operational states. These are as outlined below. If the Alarm LED is "ON" and the STS condition is not immediately able to be determined from the LED indicators then the user may use the HLI port or voltage free contact status at the rear of the STS to further interrogate the unit.



SUPPLY 1	Green -> Available Green Flashing -> Not within Specification Red -> Failed
SUPPLY 2	Green -> Available Green Flashing -> Not within Specification Red -> Failed
1	Green -> On Line (connected to critical load) Red -> Not on (NOT connected to critical load)
2	Green -> On Line (connected to critical load) Red -> Not on (NOT connected to critical load)
SYNC	Green -> In synchronism Green Flashing -> Occasionally in Synchronism Red -> Not in synchronism
LOAD	Green -> Normal Red -> Alarm (flashing) -> Overloaded

3.3 USER I/O Panel controls



PREFERRED SOURCE SELECTION (pre-set)

0	No preferred source
1	Supply 1 is the preferred source. If STS is forced to automatically transfer the critical load to the alternate (Supply 2) source the STS will automatically transfer back to Supply 1 when again within tolerance and a pre-set settling delay.
2	Supply 2 is the preferred source. If STS is forced to automatically transfer the critical load to the alternate (Supply 1) source the STS will automatically transfer back to Supply 2 when again within tolerance and pre-set settling delay.

CONTROL OVERRIDE (CAUTION for Maintenance ONLY)

0	Normal - Automatic
1	Control Override -> Supply 1 is forced to supply the critical load directly overriding any internal control logic.
2	Control Override -> Supply 2 is forced to supply the critical load directly overriding any internal control logic.

3-PHASE BUS Not Available in this model

Parallel Bus Not Available in this model

3.4 USER ALARMS PANEL ACCESS

CAUTION

The power cabling should not be run adjacent to user controls. Separate these control cables from power circuits by at least 300 mm. The control signals are distance limited to 30 metres.

All output relays contacts are rated for 50 V DC 1 Ampere (Not 230 V AC rated)

User Remote Inputs (Voltage free contact closure controllers only)

COMM -> Common return

- a -> Transfer to Supply 1
- b -> Transfer to Supply 2
- c -> Fire Stop (Causes both Switches to go off - loss of output)

User Relay Outputs

Relays are normally closed and held open in OK state (closed contact represents the alarm state).

- A -> General Alarm
- B -> Not in Synchronism
- C -> Supply 1 OK
- D -> Supply 2 OK
- E -> ON Supply 1
- F -> On Supply 2
- G -> Overloaded

RS232 PORT (The RS232 port has not been enabled on this model)

All settings and calibrations can be performed through the front panel.

LAN - for connection of browser PC (LAN port has not been enabled on this model)

4.0 MAINTENANCE OPERATIONS

4.1 Maintenance Bypass Procedure

Note if the Q1, Q2 or Q3 trip then the toggle is in the centre tripped position. To reinstate the user must first depress the toggle to the off position before being able to raise the toggle into the on position.

Similarly for Q4 and Q5 the rotary handle must be rotated anti-clockwise to the off position before rotating clockwise to the on position.

In the case of a control failure the STS internal control logic can be overridden and the output can be forced to the correct state using the OVERRIDE switch to position 1 or 2 as appropriate. Remember that the switch needs to be in the centre “O” position for normal operation.

The override provides control logic bypass only' it does not provide an alternative path for the load power.

NEVER attempt to operate the OVERRIDE switch if the supplies are not in synchronism. There is no interlock to prevent the switch from being operated when the supplies are not available or not in synchronism. Refer to the LCD variables display and mimic diagram for the not in synchronism state, (SYNC LED will be RED, variables display will show degrees out of synchronism. Only operate when less than 10 degrees). If the control is not operating you may need to use other means to determine that the supplies are in synchronism. Do not operate the OVERRIDE switch onto an absent supply.

Do not defeat the mechanical and or electrical interlock scheme of Q4 and Q4.

Do not operate the unit without the fans operating.

e.g. Q1 & Q2 & Q3 must be open if fan fuses are removed

CAUTION

THIS EQUIPMENT RECEIVES POWER FROM MORE THAN ONE SOURCE.
DISCONNECT OUTPUT AND ALL INPUT SOURCES OF POWER FROM THIS
EQUIPMENT BEFORE SERVICING.

WARNING

HIGH LEAKAGE CURRENTS ON ISOLATED INCOMING AND OUTGOING CIRCUITS

EARTH CONNECTION IS ESSENTIAL BEFORE WORKING ON CIRCUITS OR CONNECTING / DISCONNECTING SUPPLIES. SEE INSTALLATION INSTRUCTIONS BEFORE CONNECTING / DISCONNECTING INPUT SUPPLIES.

Read this whole document thoroughly. Understand every aspect before proceeding. Request further assistance if you do not understand any aspect of the operation of the STS. Support and contact numbers are at the rear of the manual.

Consider electrical distribution discrimination carefully. The STS has two incoming AC power isolators your upstream protective devices must discriminate with down stream protective devices and limit the peak fault current to less than 35kA so that when a fault occurs other items connected to the STS are not powered off by the opening upstream protective devices. The STS fuse should only open if the down stream device protection is unable to trip or there is a fault within the STS.

In case of down stream fault the STS will not transfer the fault to the alternate supply even if the voltage is adversely affected. Once the fault current has cleared the STS will resume normal operation protecting the critical loads from voltage disturbances, (10 second settling time).

After following all of the considerations and precautionary processes in the last section and been successful and understanding, then no further special set-up is necessary. Each unit has been fully certified and heat soaked prior to shipment.

The red LED ALARM should not be on.

If it is check the following states.

- ON Supply 1 when priority is Supply 2
- On Supply 2 when priority is Supply 1
- Supply 1 or Supply 2 are not in spec.
- Override Switch is in position 1 or 2
- Supply 1 & 2 are not in synchronism
- The unit is too hot (thermal bi-metal switch on H.S. activated)
- There is / was an overcurrent/ overload / load fault condition

CAUTION

REMOVAL OF PANELS EXPOSES DANGEROUS VOLTAGES
ACCESS RESTRICTED TO QUALIFIED PERSONNEL ONLY

Ensure from the supply that you are connected to on the STS is also the supply selected by the Maintenance Bypass Switch supply. Rotate the Maintenance Bypass Switch to the central "N", normal position. If you have a remote maintenance bypass then it too should be in the normal position, prior to this step.

Try using the TRANSFER push button to transfer to the alternate supply. To affect a transfer you need to push and hold the transfer pushbutton for at least 2 seconds. The LCD should show that it is now powering the load from the other supply, (non preferred).

4.2 To Maintenance Bypass

1. If possible use the TRANSFER pushbutton to transfer the load to the desired source (Supply 1 or Supply 2).
2. Use the OVERRIDE slide switch (located lower RHS, near fuses, F1-F6) and operate to the 1 or 2 position corresponding to Supply 1 and Supply 2 respectively.
3. To transfer to Maintenance Bypass on Supply 1 operate the Q4 Maintenance Bypass Isolator to the ON (clockwise) position. *(May need to reset the isolator to the off position (anti-clockwise) before being able to turn ON).*

OR

4. To transfer to Maintenance Bypass on Supply 2 operate the Q5 Maintenance Bypass Isolator to the ON (clockwise) position. *(May need to reset the isolator to the off position (anti-clockwise) before being able to turn ON).*
5. The critical load is now being supplied by the Maintenance Bypass Isolators.
6. Isolate the STS by opening the STS Output Isolator Q3, (Q3 toggle down).
7. Before commencement of work on the STS it is necessary to open the incoming STS isolators Q1 and Q2. Note that dangerous voltages are still present within the STS.
8. To isolate the fans operate knife Fuses F4, F5 & F6 by pulling from the top of the fuse holder.
9. To isolate electronics power operate operate knife Fuses F1, F2 & F3 by pulling from the top of the fuse holder.

Do not operate the unit without the fans operating.

e.g. Q1 & Q2 & Q3 must be open if fan fuses are removed

4.3 Reinstatement from Maintenance Bypass Procedure

1. Reinstatement fuse F1 - F6, this will energize fans and electronics controls.
2. Ensure that OVERRIDE slide switch (*located lower RHS, near fuses, F1-F6*) is still operated to Supply 1 if Q4 is ON or Supply 2 if Q5 is ON. (*by sliding to the 1 or 2 position corresponding to Supply 1 and Supply 2 respectively*).
3. Press and hold the ALARM pushbutton for at least 5 seconds to clear any operational inhibit condition. Note that the ALARM LED will still be illuminated as the STS is not in the normal condition.
4. Close the STS incoming supply Isolators Q1 and Q2. Note that this energizes power to all internal power connections.
5. Check the LCD display and mimic and ensure that the correct supply has been selected, remove the OVERRIDE by setting the slide switch to the centre ("0") position. Again check the LCD display and mimic and ensure that the correct supply is indicated.
6. Close Q3 by operating the toggle upwards. Again check the LCD display and mimic and ensure that the correct supply is still indicated.
7. Open Q4 or Q5, (*which ever is on*) by turning the handle anti-clockwise to the off position.
8. The load is now supported by the STS.
9. Use the TRANSFER pushbuttons on the front control panel to select the desired source. Check and ensure that this corresponds to the PREFERRED source selection, (*located above the OVERRIDE switch*).
10. Check that the LCD display and mimic correctly reflect the state of the system and that the ALARM LED is off.

4.4 Fault Diagnosis & Maintenance

The STS s has been manufactured to provide a long, reliable and useful life. However, all equipment needs some maintenance.

After the welcome sign you may be prompted to enter the date and time. This will be required the first time only. We strongly encourage the setting of the date and time so that real time event correlation can be undertaken. The Real Time Clock is thereafter battery backed up.

Recommended Schedule

Once per month record the operating variables and compare with the units specifications to ensure that you are within its operating capability. Inspect the unit and note down any variations from last observation. Action may need to be taken and or reporting may need to be taken on these variances.

Once every 6 months, (sooner if the environment is bad), vacuum dust from grills at front of unit. Inspect cable / plug connections at rear for overheating.

Units with fans need their fans changed every 7 - 8 years, (70,000 Hrs life).

NOTE

Please note that the user should not undertake repair procedures or gains access to the internal of the equipment. If the unit is faulty then it should be removed from service as per the accompanying procedure and returned for repair.

4.5 Interpretation of LCD event list

Event Descriptor	Append	Description	STS Action Resulting
INITIALIZE		RAM CHKsum failed – Cold Start (RAM Corrupt) – Flash Defaults downloaded	None - Contact Static Power
WARM BOOT		Power-up, Warm Start, re-initialize all but RAM – Keeps Event List	Normal After Black Start
WATCHDOG TIMER	(+ Diagnostic)	Signals software / hardware problems	None - Contact Static Power
STACK	(+ Diagnostic)	Stack or Heap has overflowed	None - Contact Static Power
EEPROM		FLASH/ EEPROM Checksum error – cal may be damaged	None - Contact Static Power*
ROM		FLASH ROM has been corrupted (Program is in error)	None - Contact Static Power*
BATTERY		Battery has low power (needs replacing)	None - Contact Static Power*
COMMS	1/2/3/4/5/6/7/8	Communications has failed to Dig Proc, Ana1, Ana2, N1, N2	None - Contact Static Power (can self repair)
CALIBRATION	1/2/3	Calibration of MSP required	Contact Static Power *
LOW POWER MODE	ON/ OFF	LOW POWER MODE (Power Down Modes @ loss of electronics power)	LOW POWER MODES
S 1 / S2 / S3	AVERAGE V (R,W,B)	Supply 1 or 2 OR 3 has Steady State High or Low or phase R, W or B	Transfers to supply 2 if on 1
S 1 / S2 / S3	TRANS V (Red, White, Blu)	Supply 1 or 2 OR 3 has Transient High or Low (1 sec)	Transfers to supply 2 if on 1
S 1 / S2 / S3	LOW /OK	Supply 1 or 2 OR 3 has Steady State Low (1 sec)	Transfers to supply 2 if on 1
S 1 / S2 / S3	HI / OK	Supply 1 or 2 OR 3 has Steady State High (1 sec)	Transfers to supply 2 if on 1
SUPPLY 1 or 2 or 3	FAILED / OK	Supply 1 or 2 OR 3 has Steady State High (1 sec)	Transfers to supply 2 if on 1
OVERRIDE	0,1, 2	Controls Override set to S1	User - Manual Switch Only
PREFERRED	0,1, 2	Preferred Source Set (0 or 1)	User - Manual Switch Only
S 1 / S2	FREQ LOW / HI /OK	Frequency of supply 2 is high or low	Alarm No action
LOCAL XFER	1, 2	Local Transfer to Supply 1 or 2 requested	User - Manual Action
REMOTE XFER	1, 2	Remote transfer to Supply 1 or 2 requested	Via User Inputs or BMS
BACK FEED	1 or 2 on (R, W, B)	Back feed voltage too high on S1 or S2	Contact Static Power
REMOTE POWER	OFF/ON	Remote Supply off Requested (EPO)	Via User Inputs or BMS
SYNCRONISATION	LOS / OK	S1 & S2 not in synchronism	Alarm No action
CURRENT	WARN / HIGH /FAULT/OK	Output is overloaded (timed shutdown)	Alarm No action starts timer
HEAT SINK TEMP	HI /OK	Fans Failed or Over Stressed Device Temperatures, Heat Sink is Over temperature	No Action – Check & Reduce Loading or Ambient
LOAD FAULT	FLT/ CLR	There was a fault at the load	Does not transfer (Inhibit)
FAN	FAIL / OK	Status Indication Only	No Action - Repair
THDI	HI / OK	Total harmonic Distortion of current is very high	Alarm No Action – Check Load

THDV	HI / OK	Total harmonic Distortion of Voltage is too high	Alarm No action - Check Load
BREAKER OPEN	Q1, Q2, Q3, Q4 or Q5	Status Indication Only	Response to interlocking controls
BREAKER CLOSED	Q1, Q2, Q3, Q4 or Q5	Status Indication Only	Response to interlocking controls
TRIPPED	Q1, Q2, Q3, Q4 or Q5	Status Indication Only	Response to interlocking controls
ALARM CANCEL		Alarm Cancel was pressed	Resets Audible & Latched LED
POWER SUPPLY	1,2 or 3	Status Indication Only	None -Contact Static Power / Repair
SCR SC	S1,S2 R, W, B, N	SCR on S1 or S2 short circuit detected on phase #	Contact Static Power - Locks to safe source
SCR OC	S1,S2 R, W, B, N	SCR on S1 or S2 Open circuit detected on phase #	Contact Static Power - Locks to safe source

4.6 Load Fault

In case of sustained high current output load faults, the STS will inhibit a transfer to the alternate supply even if this means degradation or loss of source supply. It is therefore imperative that you ensure that the discrimination with down stream and upstream protective devices ensures that the downstream protective device always clears the fault first.

In case that all output is lost the faulty equipment should be located and removed from the STS output before re-instatement of power.

At this point it is recommended that the UPS source (1 or 2) be transferred to bypass to allow greater capacity to isolate down stream faults without affecting UPS output voltage integrity. It will be necessary to gain access to the STS internal maintenance bypass switch for 1 or 2 (switch Q4 or Q5) . The supply from the UPS system in bypass mode should be selected by manual operation of the corresponding maintenance bypass switch.

Application of this power should clear any downstream faults still present. The alarm pushbutton is then pressed for 10 seconds to reset the alarm conditions, followed by the transfer switch for the desired source to reinstate the STS to normal operation. When the LED mimic indicates that the STS is active again (the 1 or 2 LED is illuminated), the maintenance bypass isolator can be manually opened.

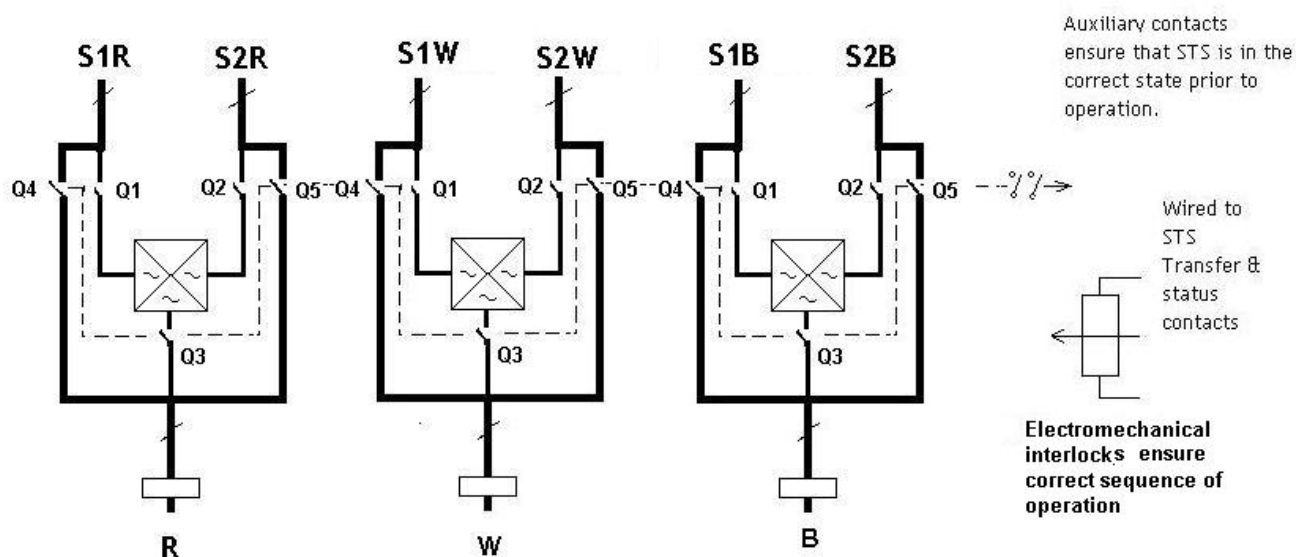
5.0 SYSTEM DESCRIPTION

Static Transfer Switch Maintenance Bypass Operational Description (STS)

The Static Transfer Switch (STS) provides power to items requiring a single AC supply. The STS selects this supply from one of two input AC supplies. If one of the supply sources becomes unavailable the STS will automatically transfer the critical load to the alternative AC supply source.

Manual selection of supply is also possible.

With reference to the accompanying schematic the following operational maintenance bypass arrangement has been adopted.



Q1 and Q2 are the STS incoming supplies to the STS. They are always "ON" unless the STS requires isolation for maintenance.

1. Similarly Q3 is also always normally "ON".
2. Power to the critical load is provided by either STS S1 or S2.
3. Should the operator wish to transfer the critical load to the alternate supply; say from S1 to S2 then the STS TRANSFER control pushbutton is used to achieve this.
4. Q4 and Q5, Maintenance Bypass isolator for Supply 1 and Maintenance Bypass isolator for Supply 2 respectively are normally always left "OFF". These are mechanically interlocked so that only one can ever be closed. They are also electrically interlocked with the STS so that only the correct one can be closed, e.g. Q4 if on S1 OR Q5 if on S2.

5. If maintenance on the STS is to be undertaken then it is recommended that the system is transferred to 'Maintenance Bypass' using either Q4 or Q5. Only one of these will be able to be closed depending on the state of the STS. If the STS is supplying the critical load via S2 then only Q5 is able to be closed because of the electrical interlock between the STS and Q4 and Q5, (and also Q3).
6. A control override function exists that enables transfer to the alternate supply in case of STS controls malfunction.
7. Once on 'Maintenance Bypass', e.g. Q4 or Q5 are closed, it is advisable to open Q3 to isolate the STS from the critical load. This also facilitates testing of the STS. For convenience Q3 is automatically tripped open after 1 minute after the closure of the either Q4 or Q5. The Q3 can be re-closed at any time for re-instatement provided the correct state has been selected, e.g. when S2 is the maintenance bypass supply, Q5 is closed; for re-instatement, (closure of Q3) the STS must be selected to Supply 2.
8. Again if left unattended the Q3 will again be timed open.
9. Once Q3 is open the STS can be tested in situ, transferring between S1 and S2, however, without any connection to the critical load because Q3 is open.
10. The above described control function is implemented using shunt trip devices such that if no supply is present or the STS is removed the control function is disabled and they operate as manual non controllable isolators only.
11. To achieve this functionality auxiliary contacts and shunt trips have been fitted to Q3, Q4 and Q5. The controls are implemented separately from the STS controls and the mode of failure of this control feature has been specifically designed to NOT interfere with or operate any of these isolators, however, if desired the Q3 trip facility can be disabled and operated fully manually.
12. Q1 and Q2 are also able to be tripped by the system. This is only undertaken if there is a thyristor fault or a supply back feed condition and is not part of the normal operation.

Note if the Q1, Q2 or Q3 trip then the toggle is in the centre tripped position. To reinstate the user must first depress the toggle to the off position before being able to raise the toggle into the on position.

Similarly for Q4 and Q5 the rotary handle must be rotated anti-clockwise to the off position before rotating clockwise to the on position.

In the case of a control failure the STS internal control logic can be overridden and the output can be forced to the correct state using the OVERRIDE switch to position 1 or 2 as appropriate. Remember that the switch needs to be in the centre "O" position for normal operation.

The override provides control logic bypass only' it does not provide an alternative path for the load power.

NEVER attempt to operate the OVERRIDE switch if the supplies are not in synchronism. There is no interlock to prevent the switch from being operated when the supplies are not available or not in synchronism. Refer to the LCD variables display and mimic diagram for the not in synchronism state, (SYNC LED will be RED, variables display will show degrees out of synchronism. Only operate when less than 10 degrees). If the control is not operating you may need to use other means to determine that the supplies are in synchronism. Do not operate the OVERRIDE switch onto an absent supply.

Do not defeat the mechanical and or electrical interlock scheme of Q4 and Q4.

6.0 SPECIFICATIONS

6.1 Operating Parameters


Steady state Rating	400 Amperes RMS / phase including Neutral
Overload capacity	110% 60 minutes any phase 125% 15 minutes any phase 400% maximum
Synchronization Inhibit limit	9 degrees (0.5 msec) (Manual TRANSFER) 30 degrees Auto transfer (Under Supply Fault) (pre-settable 5 – 180 degrees) > 30 degree Break time 50 msec (20 – 150 msec)
Steady State Transfer Threshold	+/- 10% (1 second) settable
Transient Transfer Threshold	+/- 18% (sub cycle) settable
Re-transfer (preferred source) time-out	less than 3 seconds (0-15 sec)
KA Capacity of unit	35 kA, 10 msec
Operating Voltage	+/- 20% , THDV < 20%
Protection:	Electronic / voltage and current Open circuit device Short circuit device Output phase voltage imbalance Overload Load Fault Device Over-temperature Control Fault Ambient Over-temperature
Operation	Manual & Automatic Sense Preferred Source Selection

7.0 MAIN ITEM COMPONENTS

Part	Description	Manufacturer	Part Number	Rating
THY1 - 1 to 18	Thyristors	Eupec	T1509	3000 Amps/ 1700 V
SN1-6	Snubber / Varistor	CornelDubeler	940C8W1K-F	1uF/100hms 1000V
CT1	CURRENT TRANSFORMER	TELEMA	AC1200	200 Amps
Q1,Q2,Q3,Q4& Q5	ISOLATOR	Moeller	iN250N + XBZZM3	225 Amps
Fan 1- 4	Fans	Sonon	150AC240X38	240 V 50 Hz
FI#	Fuses & terminals	Pheonix	ST10	10 Amperes 240 V AC
PRS1 - 6	POWER SUPPLIES	MEANWELL	PD125A	12 & 5 V 125W
SP009	POWER CONTROL BOARD	STATIC POWER	SP09-02	n/a
SP002	STS CONTROL BOARD	STATIC POWER	SP002-01	n/a
SP013	DISPLAY BOARD	STATIC POWER	SP013-00	n/a
SP011	USER I/O BOARD	STATIC POWER	SP011-00	n/a
SP019	Isolator Interlock Bd	STATIC POWER	SP019-00	n/a

8. CONTACTS

For Service and Maintenance

 - **STS Manufacturing** is a subsidiary of **STATIC POWER PTY. LTD.**
ABN 42 101 765 913

Factory @ 5/39-45 Susan Street Eltham, Victoria Australia, 3095
Mail to: , BOX 2003 Research Delivery Centre, Research 3095

Product Return / Repair:

5/ 39-45 Susan Street Eltham, Victoria, Australia, 3095
PH. +613 9431 0494, Fax +613 9431 0939

Email sales@i-sts.com.au

support@i-sts.com.au

or visit www.i-sts.com.au