

Static Transfer Switch MODEL M

i - STS

The Model M ϵ -STS provides uninterrupted power to your critical equipment by automatically switching between two independent power sources upon detection of a problem. To avoid the dangers of paralleling power sources, all switching is break-before-make and is completed in less than 5 milliseconds, ensuring no disruption to the operation of your equipment.

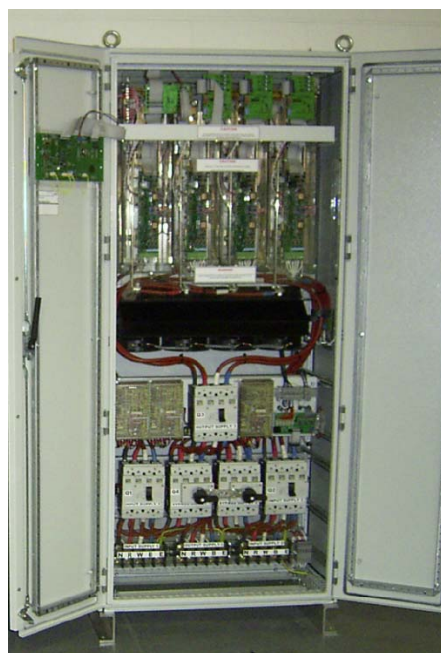
With limited install infrastructure this unit offers industries smallest footprint Only 400 mm depth (Size 800 wide x 1900 high).

These units are extra rugged and contain high fault capacity solid state thyristors for installation into high fault current environments, (35 or 50 kA capable short circuit capability).

The Range:

Rated from 125 to 250 Amperes in either 3 phase, 3 or 4 pole configurations complete with integrated mechanically and electrically interlocked maintenance bypass facility.

Fully redundant low noise (<60dB(A)) monitored fan cooling.



Maximum Reliability:

The Model M ϵ -STS features a high reliability, low maintenance, robust design with redundant circuitry. The units use DSP high speed digital sampling for stable, reliable and predictable operation. We are so confident of the reliability of our equipment, we offer the industry's longest warranty period.

Simplicity Is The Key:

Bi-colour LED mimic and large format backlit graphic LCD panel to provide useful realtime information such as variables that are displayed on a single screen, power quality, 100 deep event log and utilisation history.

The ϵ -STS can be easily transferred from one supply to the other by using the 'TRANSFER' pushbutton while the LCD has an uncomplicated easy to read and interpret control hierarchy which is operated using the down and right arrow pushbuttons.

Setting of all STS parameters is achieved via the LCD or using the web browser interface, (password protected). Dual setpoints for Manual and Auto Mode from User Control Panel.

User selectable preferred source and a controls override function.

Communication:

Each ϵ -STS is fitted with seven voltage-free contacts and three remote inputs. For more advanced monitoring, we also offer MODBUS or a web browser interface to monitor and if needed, control the STS.

ϵ -STS Features	Benefits
Industry's Smallest Size Static Transfer Switch	Ideal for corridors or adjacent to existing distribution boards.
Fully Redundant Low noise Fans	Low noise and maximum reliability
Break Before Make Transfers	Prevent paralleling of input sources
Large Overload and Fault Capacity (contains fuses)	Suitable for installations with fault capacity up to 35 & 50kA
Guaranteed Load Fault Transfer Lock-out	Will not transfer faults to alternative source
Synchronous and Non-Synchronous Transfers Allowed	Transfer at safely even if sources are asynchronous
SCR Open and Short Circuit Protection	No overlapping or loss of supply due to SCR or control failures
LAN Web Server Option Built Into Hardware	Monitor and control STS through Web Browser software
Redundant Controls and Triple Redundant Power Supply	More secure higher MTBF for your equipment / Redundant power monitoring

Specifications

Rating	125/200/250 Amperes RMS
Voltage Rating	415/240 V \pm 20%
Permissible Voltage Distortion	20% THDV
Frequency	50 Hz \pm 5%
Type	3 + N (3-phase, 4-pole, or 3 phase, 3-pole)
Efficiency	99.7 %
Transfer Type	Thyristor (break-before-make, no source overlap, zero current)
Detection	Digital (< 1 msec)
dV/dt	>1000 V/ μ sec
MTBF	> 800,000 Hrs
Device Ratings	3500 Amperes RMS, 1600 Volts, 35 kA 10msec, > 7,000,000 A ² Sec
Fault rating	35 kA (or 50kA optional)
Fault Current Setting	500 Amperes peak (transfer lock-out)
Protection	External
Overload Capacity	Up to 300 Amperes for 30 seconds (120%) 1500 Amperes for 0.5 second (600%) 2500 Amperes for 100 msec (1000%) 35,000 Amperes for 10 msec
Remote I/O	7 x Voltage free contacts (50 V DC, 1 Ampere, N/C)
LAN Browser	Optional
Modbus TCP	Optional
Modbus RTU (RS232)	Optional
Operating Temperature	0 - 40 °C
Cooling	Fan forced, redundant
Noise	< 60 dB(A) typically
Physical Size	1900mm high x 80mm wide x 400mm deep
Cable Entry	Bottom
Maintenance Access	Front Only (via double, lockable doors), Fully shrouded.
Weight	145 kg (typical)
Colour	RAL7035 (Riverstone, off white)
Compliance	AS3100 & AS/NZ/IEC 62310-1 (for STSs)
Warranty	24 months

Subject to change without notice.

Static Transfer Switches

⚡ STS Manufacturing is a subsidiary of
STATIC POWER PTY. LTD.
ABN 42 101 765 913

Post to:

Box 2003
Research Delivery Centre
Research VIC 3095
Australia

Manufactured at:

5/39-45 Susan Street
Eltham VIC 3095
Australia

Phone: +613 9431 0494
Fax : +613 9431 0939
Email : sales@i-sts.com.au
Web : www.i-sts.com.au